

GNSA Primary Knowledge Map – Geography



Topic: The Amazon Rainforest

Year: 3

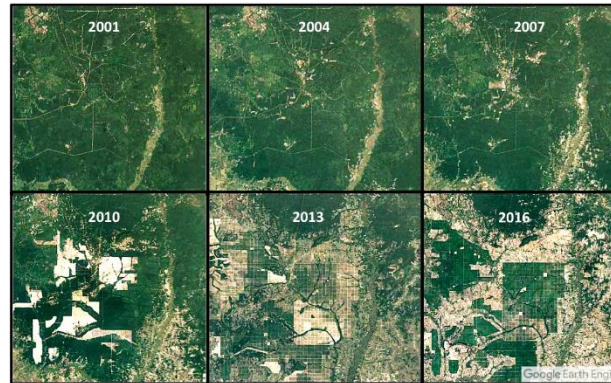
Strand: Describe and understand key aspects of physical geography.

What do I know already?

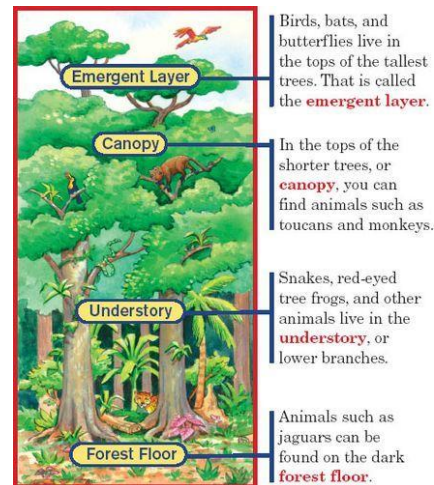
- The continents in the world.
- How to locate places in an atlas.
- What the climate is like in different parts of the globe.
- Where South America is located on a world map.
- What human and physical features are in the United Kingdom.

Key Vocabulary

Atlas	A book of maps of the world and its countries.
Threats	To show that they want to do harm to something.
Deforestation	The clearing and cutting down of forests.
Rainforest	Tall, thick forest that receives lots of rain every year.
Cause and Effect	What has happened and what happens as a result.
Layers	A section of something.
Climate	Weather conditions in an area.
Equator	An imaginary line around the middle of a planet.
Compass	An object that shows us which direction we are going.
Preservation	To keep safe from harm or destruction.
Biome	An area with certain weather conditions and animals living there.
Eco-system	All the living and non-living things in an area.
Tropics	A part of the Earth that is closest to the equator.
Humid	Damp but warm area.
Indigenous	The first people to live in a place.



Rainforest deforestation over time



Rainforest layers

Human Features:

- Humans have been cutting down the rainforest trees for logging. This has been destroying more of the rainforest each year as it is not always done in a renewable way.
- Other threats to the rainforest include farming, mining, building of roads and a growing population with rainforest areas cleared to build houses.
- Tropical rainforests provide many goods and services such as food, crops, medicines and raw materials such as timber.

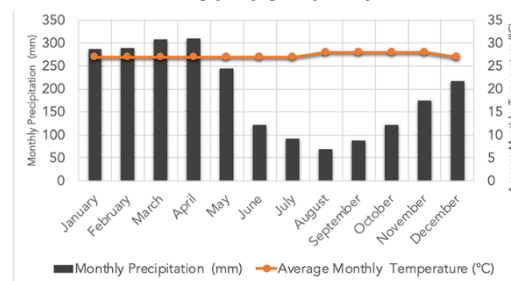
Physical Features:

- The climate of the rainforest is warm, with high rainfall and high temperatures.
- There are five layers to the rainforest and different animals and plants live in each layer. They are called: emergent layer; canopy layer; under canopy layer; shrub layer or understory; forest floor.
- Different amounts of sunlight reaches each part of the rainforest. The emergent layers gets more sunlight than the forest floor because of the plants and leaves.

Geographical Skills:

- Use maps, atlases and globes to locate and describe features.
- Use the six points of a compass and four figure grid references.

Amount of rainfall



Map:

